



Shenzhen Wave Optoelectronics Technology Co., Ltd

Professional Precise Portable Make Measurement Easier



www.colorinstrument.cn

Tri-angle Gloss Meter WG68 (20/60/85°)



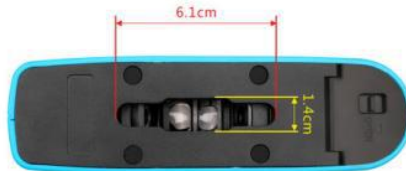
Introduction:

WG68 gloss meter is produced according to the national verification regulation of JJG696 standard, adopt long life light source, good repeatability, small volume, high precision and good stability. It is mainly used coatings, printing ink, paint, paint, wood, marble, granite, to change polishing brick, brick of pottery and porcelain, plastic, paper, metal and non-metallic materials to the surface of the mirror gloss measurement, more stable performance, more durable, more comfortable;



Measuring Area Application:

Big aperture **6.1*1.4cm** is normally used on flat or wide arc surface samples.



20° for high gloss, more than 200Gu.

60° for normal gloss, from 10-200Gu.

85° for low gloss, less than 10Gu.

NDTKALA.CO
 Non-Destructive Test (NDT) Equipment

تامین تجهیزات و مواد مصرفی تست های غیر مخرب ایران
 ۰۲۱-۷۱۰۵۳۸۸۸ ۰۹۱۲۰۲۶۶۲۷۰



Shenzhen Wave Optoelectronics Technology Co., Ltd

Professional Precise Portable Make Measurement Easier



www.colorinstrument.cn

Advantages :

1. One button to complete triangle measurement: one operation can complete three angle measurement; Measuring light incident angle meet ISO 2813 three measuring light incident angle. Three incident angle of mirror gloss meter is 20 °, 60 °, 85 ° respectively;
2. Optional angle mode: choose measuring angle or angle combination according to user needs.
3. Manually entering standard samples gloss data;
4. Humanized design, good man-machine communication interface;
5. Three angle can store 50000 testing records, storage structure is: 100 prototypes, each prototype with 500 testing data;
6. Data browsing and viewing function;
7. The machine has automatic shutdown function, low power warning functions, full data storage hint functions;
8. USB communication interface to communicate with PC;
9. PC software can be extended more functions.

Data Sheet

Model	WG68
Measurement Range	20°: 0-2000 60°: 0-1000 85°: 0-160
Application	paint, ink, stoving varnish, coating, wood products; Marble, granite, vitrified polished tile, pottery brick and porcelain; Plastic, printing, paper; Other metallic material.
Projection Angle	20° 60° 85°
Measuring Spot	20°: 10x10 60°: 9x15 85°: 5x38
Measuring Mode	Automatic/manual/single/ average and combination angle/Show maximum/minimum value
Standard Sample Setting	Manually setting/bring out stored data for setting/manually setting tolerance
Data Storage	50000 groups set standard sample in any stored data, user-define the tolerance range
Language	English
Output	Software to PC
Division Value	0.1Gu
Repeatability	0-100:0.2 > 100:0.2%
Reproducibility	0.2Gu
Indication Error	1.0Gu
International Standard 60°	ISO-2813/ASTM-C584/ASTM-D523/DIN-67530/ASTM-D2457/JND-A60/JND-P60/ISO7668
National Standard 60°	GB 9754/GB 9966/GB 8807 - GB/T 9754,GB/T 13891,GB/T 7706,GB/T 8807



Shenzhen Wave Optoelectronics Technology Co., Ltd

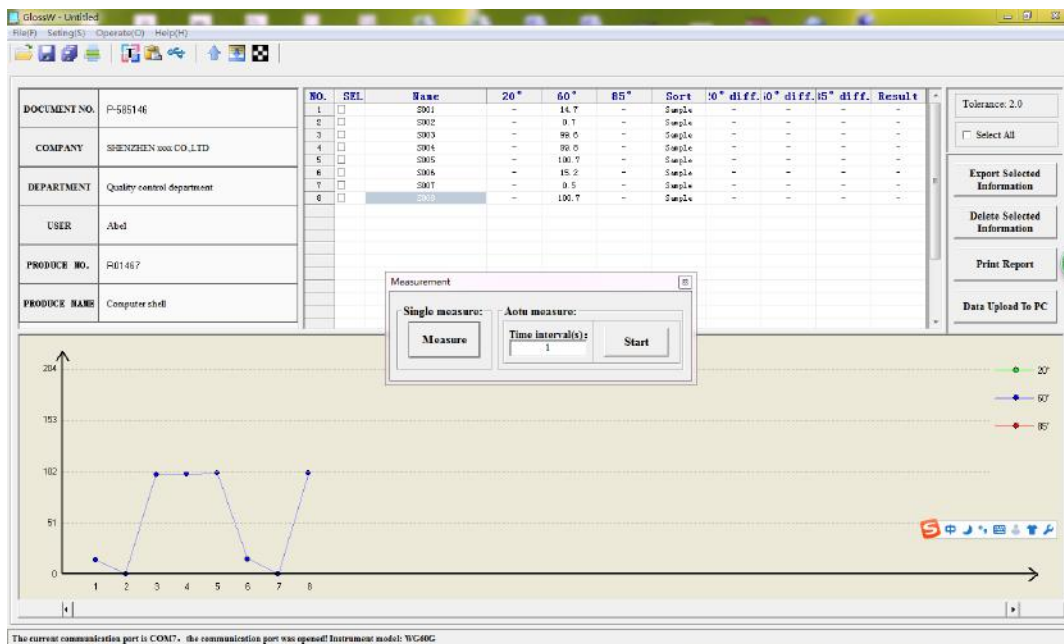
Professional Precise Portable Make Measurement Easier



www.colorinstrument.cn

Working Temperature	10°C - 40°C
Storage Temperature	-10°C - 70°C
Humidity Range	Relative humidity less than 85%, without condensation
Volume	159x49x72mm
Weight	500g
Standard Accessories	Power adapter/User manual Warranty card/standard board/5V battery/USB cable /GlossW software (CD)

GlossW Software



NDTKALA®
Non-Destructive Test (NDT) Equipment

تأمین تجهیزات و مواد مصرفی تست های غیر مخرب ایران
۰۲۱-۷۱۰۵۳۸۸۸ ۰۹۱۲۰۲۴۶۲۷۰



Shenzhen Wave Optoelectronics Technology Co., Ltd

Professional Precise Portable Make Measurement Easier



www.colorinstrument.cn

Gloss Measuring Report										
File No.	2015.7.0			Company name			Shenzhen Wave Optoelectronics			
Department	engineer cop			operator			color measuring			
Product No.	1			product name			color paper			
ID	REFID	2θ	90°	80°	200°	80°D	80°P	80°T	REMARK	DATE AND TIME
1	9001	-	58.0	-						2015-07-08 08:29:55
2	9002	-	55.1	-						2015-07-08 08:29:57
3	9003	-	50.0	-						2015-07-08 08:29:59
4	9004	-	21.0	-						2015-07-08 08:30:01
5	9005	-	21.2	-						2015-07-08 08:30:03
6	9006	-	992.0	-						2015-07-08 08:30:05
7	9007	-	993.0	-						2015-07-08 08:30:07
8	9008	-	993.0	-						2015-07-08 08:30:09
9	9009	-	0.0	-						2015-07-08 08:30:11
10	9010	-	4.0	-						2015-07-08 08:30:13
11	9011	-	4.0	-						2015-07-08 08:30:15
12	9012	-	4.0	-						2015-07-08 08:30:17
13	9013	-	17.0	-						2015-07-08 08:30:19
14	9014	-	17.0	-						2015-07-08 08:30:21
15	9015	-	10.6	-						2015-07-08 08:30:23
16	9016	-	0.0	-						2015-07-08 08:30:25

Youtube video link: <https://www.youtube.com/watch?v=MgphhQzcxOU>

Certificates: CE/ROHS/CNAS



About Us:

Shenzhen Wave Optoelectronics Technology Co., Ltd is a National high-tech enterprise . We are R&D manufacturer that mainly offers Spectrophotometer、Colorimeter、Gloss meter、Thickness meter etc. in Shenzhen ,China for 10 years. All series of products pass CE/ROHS/CNAS international approvals. If any enquiry on these products, we are ready to do support, thank you!



Shenzhen Wave Optoelectronics Technology Co., Ltd

Professional Precise Portable Make Measurement Easier



www.colorinstrument.cn



Moka Long

Senior Sales Engineer

Shenzhen Wave Optoelectronics Technology Co.,Ltd

E-Mail: moka@fruglobal.com

Skype: sales_75817

Mob/Wechat/whatsapp:+86 13088818104